

PLANNING REF: ST/0764/12/FUL
CONDITION 9 – Acoustic Glazing

Condition Wording is as follows:

Prior to installation and having regard to the recommendations of the submitted Noise Assessment (QEM Systems Ltd. report ref BH/CPA/09/12, received 26/09/2012), a detailed scheme of acoustic glazing / trickle vents for apartment block 2 shall be submitted to and agreed in writing by the Local Planning Authority. Development shall be carried out in accordance with the agreed details.

In accordance with the Noise Assessment report produced by QEM Systems Ltd, Ref: BH/CPA/09/12, we confirm that glazing will be installed in accordance with Figure 1 opposite which has been extracted from the afore mentioned report.

For clarity, double glazed units will be installed to habitable rooms as follows:

- **South East Elevation** (Adj to Sunderland Road): 10 / 6 to 20 mm / 6 or similar, which provides approximately 32 CTR dB(A) insulation
- **North East and Southern Elevation** (Up to 25m from Sunderland Rd): 10 / 6 to 20 mm / 6 or similar, which provides approximately 32 CTR dB(A) insulation
- **North East Elevation** (> 25m from Sunderland Rd): 6 / 6 to 20 mm / 4 or similar, which provides approximately 28 CTR dB(A) insulation
- **South West Elevation:** 4 / 6 to 20 mm / 4 or similar, which provides approximately 25 CTR dB(A) insulation.
- **North West Elevation:** 4 / 6 to 20 mm / 4 or similar, which provides approximately 25 CTR dB(A) insulation.

Refer to Appendix I – Saint-Gobain glazing chart for further information.

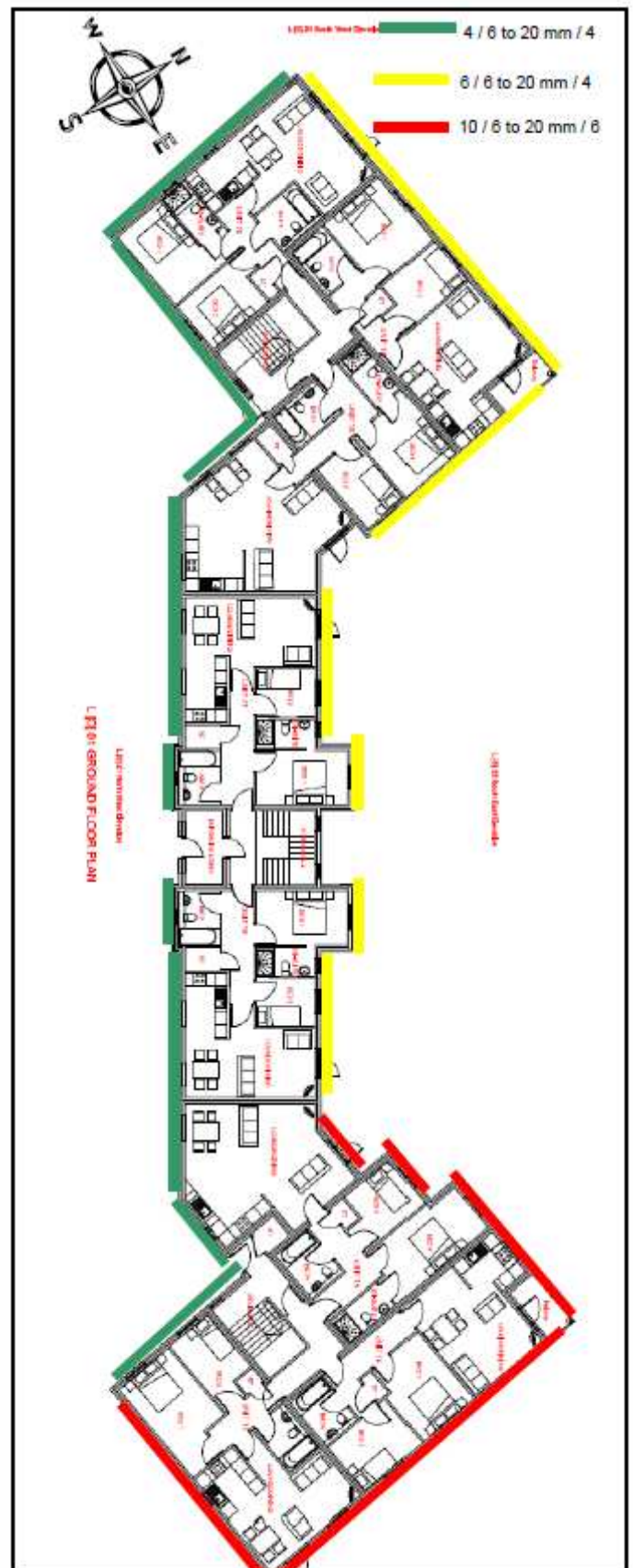


Figure 1